

# The San Francisco Bay Trail is a regional recreation corridor, connecting people to each other and to the waterfront.



The Warming Hut near the Golden Gate Bridge, offers shelter from fog & wind, with a bookstore and cafe at the north end of Crissy Field, in the Golden Gate National Park & Rec. Area.



Removal of the Embarcadero Freeway, after the Loma Prieta Earthquake, brought new investment to San Francisco's waterfront and Bay Trail, allowing for new parks to be constructed along the shoreline by the Port of San Francisco.



A wetlands eco-system has been restored in the sheltered cove within Crissy Field, below the historic military Presidio and airfield in the G.G.N.R.A

*Easy access from Highway 101 at Menlo Shores*



*Candlestick Point State Park Oyster Point.*



*Transforming San Francisco's industrial neighborhoods into healthier communities*

**When complete, the 500 mile Bay Trail will pass through 47 cities, all 9 Bay Area counties, and cross 7 toll bridges, creating a “Ring Around the Bay”.**

An important transportation corridor used by cyclists as a commute alternative, the Bay Trail connects key bike routes & mass transit options, including ferries.

Bike routes link inland communities to the waterfront trail providing free and accessible recreation for use by hikers, joggers, bicyclists and rollerbladers.

Completion of the Blue Greenway and redevelopment of Hunter’s Point, will connect San Francisco’s Southern waterfront to the Bay Trail.

The San Francisco Bay Trail Project is a nonprofit organization administered by the Association of Bay Area Governments.



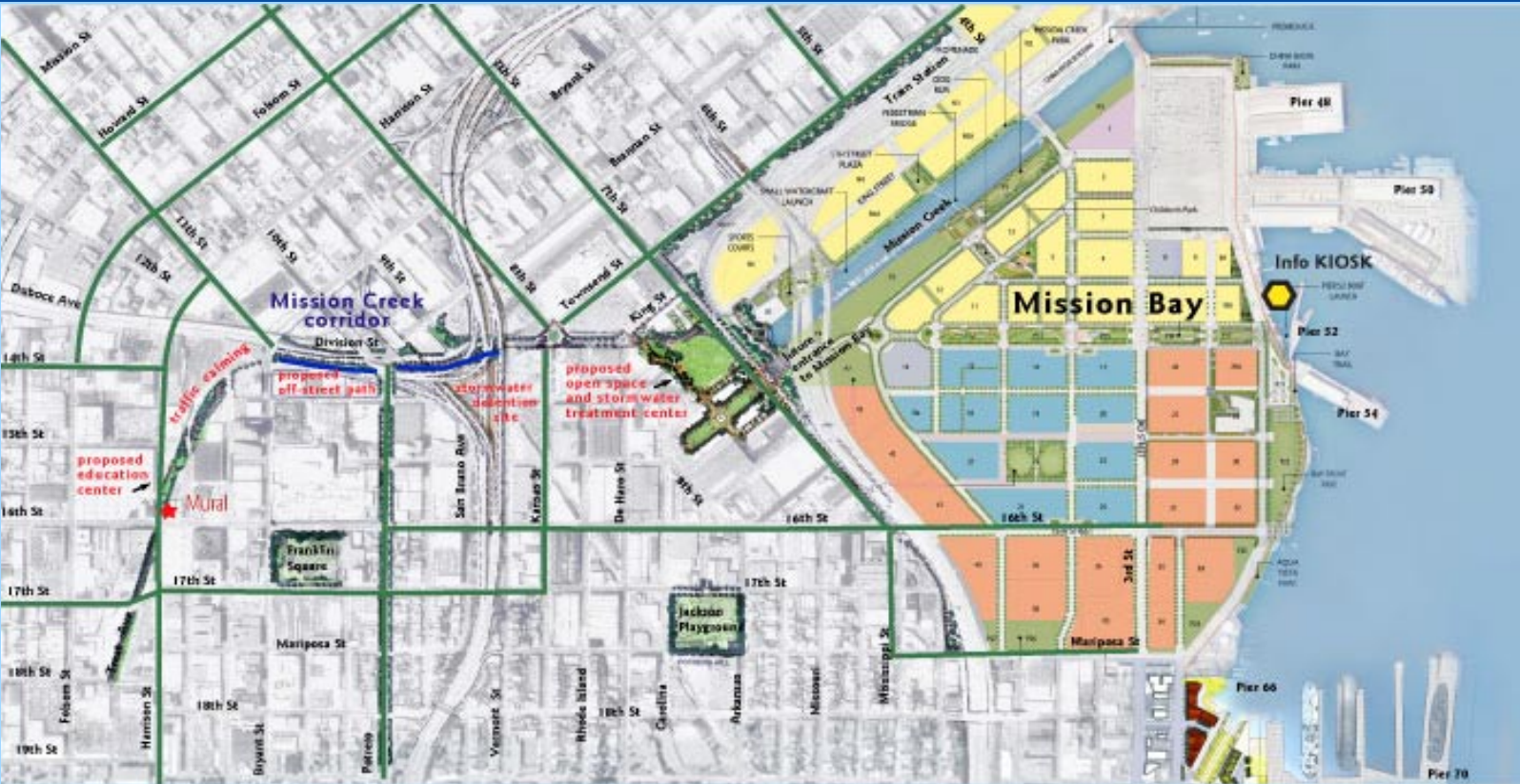
# San Francisco's Bicycle Network and Blue Greenway



- KEY**
- San Francisco Bay Trail,
  - Unimproved Bay Trail,
  - Planned future Bay Trail
  - Official San Francisco Bike Routes
  - Proposed Mission Creek Connector
- Water Ferries**

**Kiosk is Here**

# Mission Creek will be a connector trail to the waterfront along a former, historic waterway and rail right-of-way.

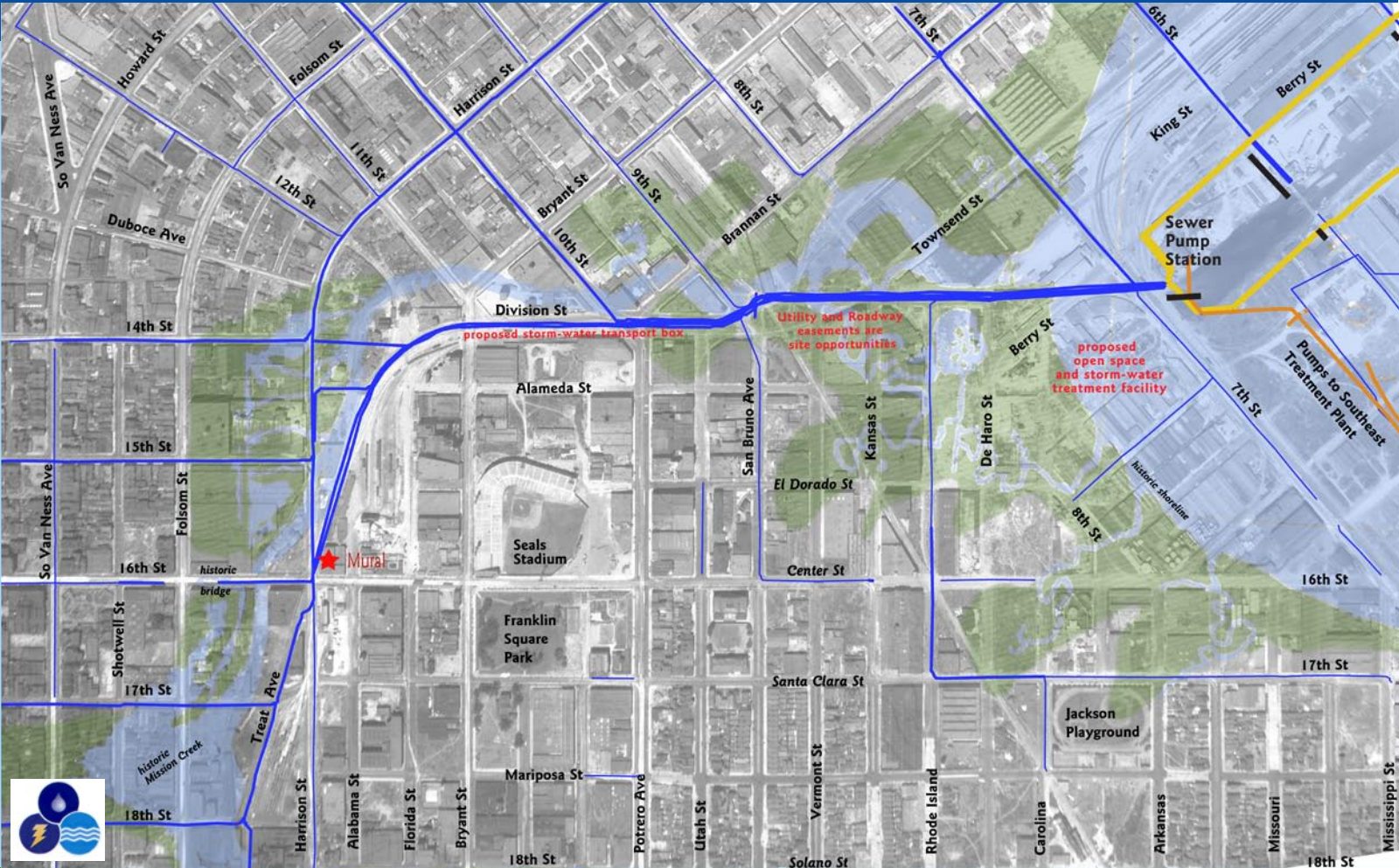


Proposed Mission Creek Improvements with Open Space and Bikeway Networks

— Existing bicycle paths

— Proposed new bicycle paths

# Waste Water System along Mission Creek rights of-way



Transforming San Francisco's industrial neighborhoods into healthier communities



# Rails-to-Trails Conservancy leads a nationwide movement to turn former rail rights-of-way into multipurpose trails.

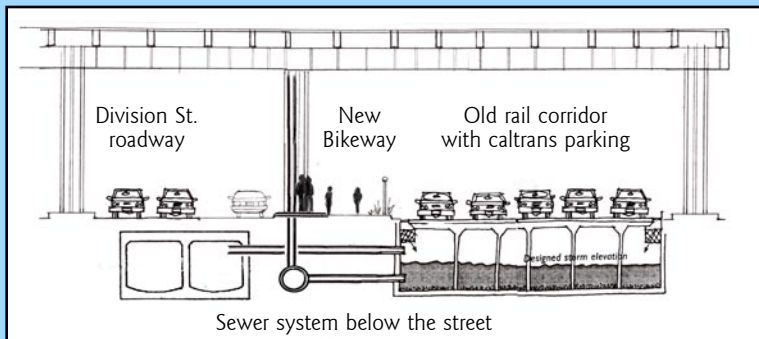


*Before - Division at 9th St. and San Bruno Ave.*



*After - Improved Mission Creek Bikeway and Greenbelt on Division at 9 st.*

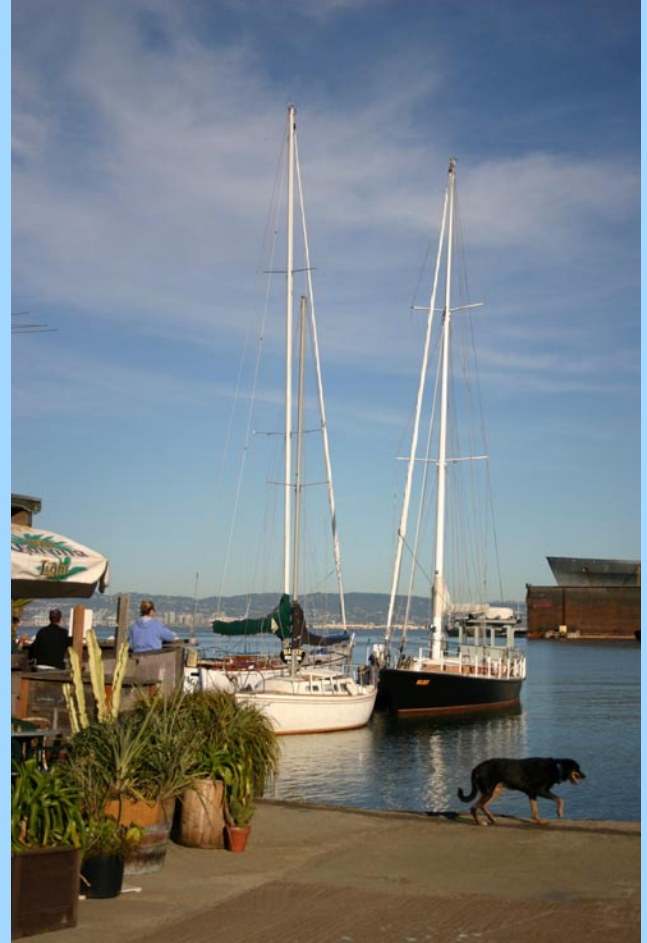
## Cross Section Division St. near Potrero



# San Francisco is building a Blue Greenway into the regional Bay Trail.

**The Blue Greenway is the unifying identity for the 13-mile, recreational corridor along San Francisco's southeast waterfront.** When complete it will link established open spaces, create new recreational opportunities and green infrastructure; provide public access through the implementation of the San Francisco Bay Trail, the Bay Area Water Trail, and green corridors to surrounding neighborhoods; install public art and interpretive elements; support stewardship; and advocate for waterfront access as an element of all planning and development processes over time.

*Pier 66*



# Blue Greenway Map and stops along the way



Transforming San Francisco's industrial neighborhoods into healthier communities

# San Francisco's only public boat launch is at Mission Bay



## San Francisco's Natural Estuary



## Where fresh water meets the sea.



Estuaries are the most productive ecosystems on Earth, containing more life per square inch than the richest farmland or deepest forest.



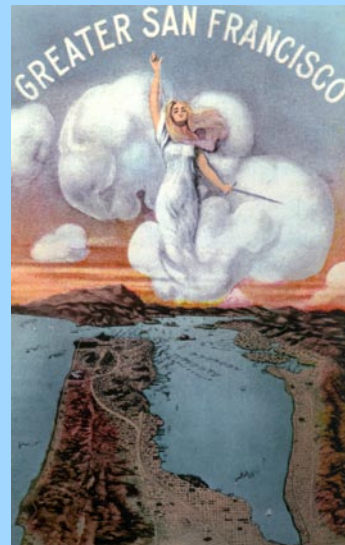
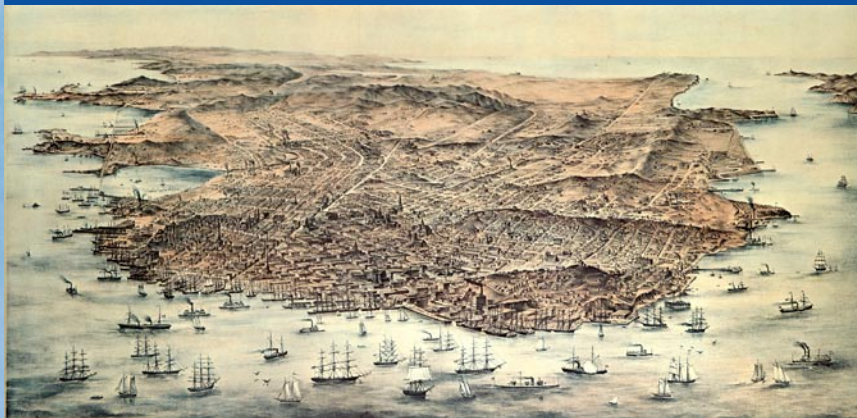
# Past Extent of San Francisco Baylands Estuary



1869 Topographic Map with 1992 Landfill Overlay



# Historic Maps of San Francisco



Transforming San Francisco's industrial neighborhoods into healthier communities